

Alpine Villa

Breckenridge, Colorado



Are your off-site gatherings and vacations realizing their peak potential? Is it time for a team meeting in a more stimulating environment than a typical urban hotel? Are you looking for a private venue in a secluded setting with contemporary features capable of accommodating everyone's special interests? Consider the Alpine Villa. The Alpine Villa is specifically designed as an luxury retreat offering an inspirational atmosphere for work, recreation, and relaxation.

The Alpine Villa is a newly constructed executive retreat in Breckenridge, Colorado. Its stunning Tuscan design includes stone, distressed wood beams, Italian tile, granite, vaulted ceilings and arched openings throughout. It features a fully audio/video enabled meeting room, high-speed Internet access, dining hall, great room, fitness health center, racquetball court/gymnasium, billiards room, elevator, roman bath, steam room, home theatre, 35' tall natural rock climbing wall and many other exclusive amenities. For overnight accommodations, it includes eight bedroom suites, two bunk bed rooms and two lofts adding to a total sleeping capacity of thirty-two beds.

Contact Elizabeth at 970-453-4924 or elizabeth@alpinelink.com to check availability and reserve the Alpine Villa for your next retreat ...
.. or visit www.alpinevillaretreat.com.

Breckenridge, Colorado

Breckenridge, a Victorian mining town established in 1862, is the oldest, continually occupied community on Colorado's western slope. The mining town includes one of Colorado's largest national historic districts, with 254 registered buildings. Today Breckenridge is more than a quaint mining town from the past with exceptional skiing. It's a year-round resort destination with enough summer and winter activities to please everyone.



Breckenridge Recreation and Entertainment

Winter - Breckenridge is the only ski area in Colorado encompassing four interconnected mountains. In addition to alpine skiing, enjoy cross-country skiing, snow-boarding, dinner sleigh/carriage rides, tubing, ice skating, and snowmobiling.

Summer - Summit County has four 18-hole championship golf courses including a 27 hole Jack Nicklaus designed public course in Breckenridge only two minutes away from the Alpine Villa. In addition to golf, enjoy horseback riding, bicycling, fishing, camping, hiking, rafting, four-wheeling, motorcycling, chairlift rides, nature walks, tennis, miniature golf, the Human Maze, the Alpine Slide, and Summit County's famous wild flowers.

Year round - Enjoy historical tours, gold mining tours, festivals, concerts, art galleries, theater, a wide variety of shopping including the Silverthorne Outlet Mall and dining on Breckenridge's famous "Main Street".

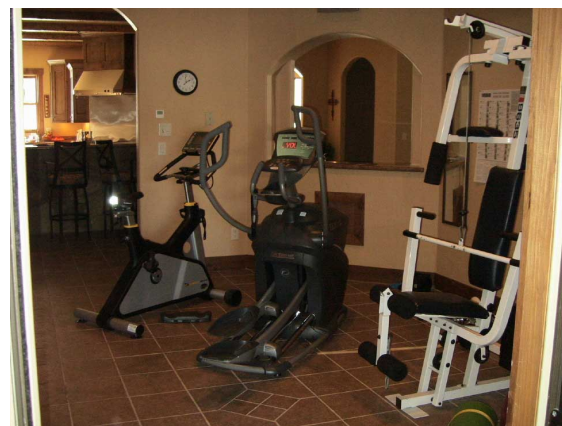
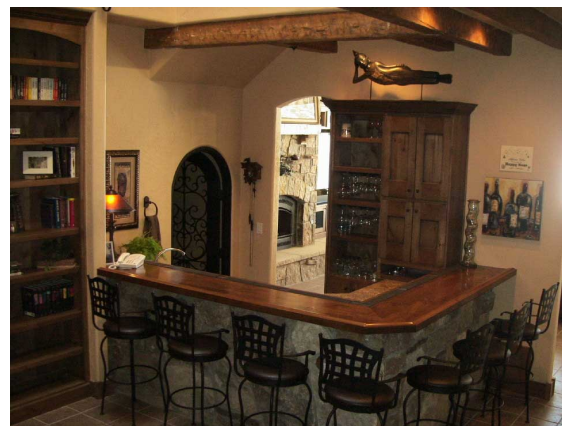
Alpine Villa Features

- Tuscan design - arches, beams, stone, tile, granite, vaulted ceilings, metal railing throughout
- Three levels
- Audio/video enabled meeting room
- High-speed Internet access from all rooms
- Eight bedroom suites
- Four additional sleeping rooms
- Thirty-two separate beds
- Twelve bathrooms
- Eight heated decks and patios
- Billiards room with pool and foosball tables
- Fully furnished oversize kitchen with large island
- Indoor gymnasium/racquetball court
- 35' tall rock climbing wall with auto-belays
- Dining hall with seating for twenty-four
- Breakfast area
- Great room
- Saloon style bar
- Exercise fitness center & equipment
- Indoor Roman bath
- Steam sauna
- Six fireplaces
- Three home theatres
- Audio system throughout with iPod input
- Guest laundry room
- Ski racks and changing room
- BBQ grills
- Back patio fire pit
- Elevator
- Interior waterfall

Alpine Villa Location Features:

- Situated on seven acres
- 360° mountain views
- Trout viewing pond in front
- Swan River with trout fishing ponds in back
- Fire pit by river for cook-outs and nighttime gatherings
- Backs to national forest with hiking/biking trails
- 27 hole championship golf course one mile away
- 4-wheel, off-road trails begin a quarter-mile away
- Breckenridge ski resort five miles away
- Keystone, A-Basin and Copper Mountain ski resorts within twenty-five minutes
- Vail, Beaver Creek ski resorts within 45 minutes
- Overflow accommodations five minutes away

Interior Pictures



Nightly Rates

Rooms and Configurations	Regular Season	High Season
• Vista Room	\$179	\$209
• Bunk Room	\$194	\$234
• Penthouse Loft	\$228	\$298
• Suites 3-8 (each)	\$269	\$319
• Master Suite	\$299	\$369
• Fitness center, racquet-ball court, steam room, Roman bath, bar, billiards room, great room, media lounge, furnished kitchen, laundry room, BBQ patio, fire pit & Internet access	incl	incl
Entire Main Retreat	\$2514	\$3024
• Meeting Room	\$595	\$595
Main Retreat w/ Mtg rm	\$3109	\$3619
• Nook & Cranny Loft	\$194	\$234
Retreat with Extra Loft	\$3303	\$3852

Terms:

- Rates good for groups up to 35 people
- High season: Christmas, New Years, July 4th, and Spring Break weeks.
- Rates subject to change until reservation and deposit are made.
- Taxes, damage deposit extra.
- Housekeeping charge extra for stays less than 4 nights.
- Check in: 4pm, check out: 10am.

Enjoy the charm of a historic Victorian mining town and the unmatched features of the Alpine Villa.

Contact Elizabeth at 970-453-4924,
 elizabeth@alpinelink.com or
 visit www.alpinevillaretreat.com.